

SOPHOS

Sophos Anti-Virus standalone startup guide

For Windows and Mac OS X

Document date: June 2007



Contents

- 1 What you need for installation4
- 2 Installing Sophos Anti-Virus for Windows.....5
- 3 Installing Sophos Anti-Virus for Mac OS X10
- 4 Clearing an alert in Windows14
- 5 Technical support.....15

1 What you need for installation

The software can be installed on

- Windows 95/98/Me
- Windows NT 4.0 Service Pack 6a or later
- Windows 2000 Service Pack 3 or later
- Windows XP Service Pack 1 or later
- Windows Server 2000 Service Pack 3 or later
- Windows Server 2003
- Windows Vista
- Mac OS X 10.2 or later.

You must have internet access in order to download the software from the Sophos website.

Windows NT/2000 or later computers must have Internet Explorer 5 or later.

Windows 95/98/Me computers must have Internet Explorer 5.5 Service Pack 1 or later.

2 Installing Sophos Anti-Virus for Windows

2.1 Before you install Sophos Anti-Virus

Before installing Sophos Anti-Virus, you must do the following.

- If you have any other vendor's anti-virus software, uninstall it.
- If you have a previous installation of Sophos Anti-Virus for Windows 95/98/Me and Sophos Remote Update, first uninstall Sophos Remote Update, and then uninstall Sophos Anti-Virus.
- If your computer is running Windows NT/2000 or later, log on as an administrator.

You can either install Sophos Anti-Virus from the **Sophos Standalone Install CD** or download the installer from the Sophos website.

To install from CD:

1. Insert the **Sophos Standalone Install CD**.
If the CD does not auto-run, use Windows Explorer to browse to the root of the CD, then double-click `launchcd.exe`.
2. On the Home page of the CD, click **Install Sophos Anti-Virus**, then click **Windows**.
3. On the next page, click **Install** to start the installation wizard.

To install from the Sophos website:

1. Using the web address and download credentials provided by your system administrator, go to the Sophos website and download the Sophos Anti-Virus installer for your version of Windows to your computer.
2. Locate the file in the folder where it was downloaded. Double-click the file. In the **Sophos off-site installer** window, click **Install** to extract the file's contents to your computer and start the installation wizard.

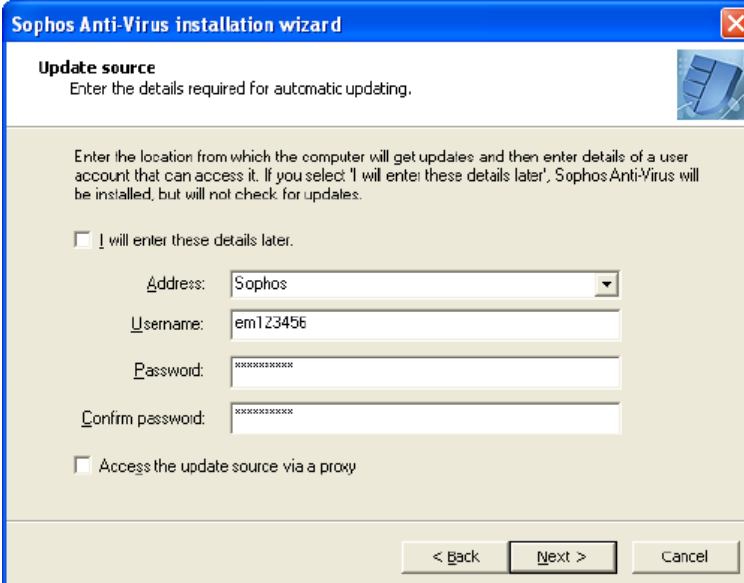
2.2 Install Sophos Anti-Virus

1. On the **Welcome** page of the **Sophos Anti-Virus installation wizard**, click **Next** to start installing.
2. On the **License Agreement** page, click **I accept the terms in the license agreement** if you agree to the terms and want to continue. Click **Next**.
3. If you are installing on Windows 2000 or later, the **Destination folder** page is displayed. If necessary, change the folder to which Sophos Anti-Virus will be installed. Click **Next**.
4. On the **Update source** page of the wizard, you enter the location from which the computer will get updates. You can do this now or specify that you want to enter these details later.

To enter the update source, select **Sophos** or, if your system administrator has supplied you with an address, type that address. Then enter the username and password, which the system administrator has supplied.

To enter the update source later, select **I will enter these details later**. Sophos Anti-Virus will not update itself until you enter these details.

If you access the internet via a proxy, select **Access the update source via a proxy**, click **Next** and go to step 5. Otherwise, click **Next** and go to [step 6](#).



The screenshot shows the 'Update source' step of the Sophos Anti-Virus installation wizard. The window title is 'Sophos Anti-Virus installation wizard'. The main heading is 'Update source' with the instruction 'Enter the details required for automatic updating.' Below this, there is a paragraph explaining that the user should enter the location for updates and user details, or select 'I will enter these details later' to skip this step. There are two radio buttons: one for 'I will enter these details later.' (which is currently unselected) and one for 'Access the update source via a proxy' (also unselected). The form contains four input fields: 'Address' (a dropdown menu with 'Sophos' selected), 'Username' (text input with 'em123456'), 'Password' (password input with masked characters), and 'Confirm password' (password input with masked characters). At the bottom, there are three buttons: '< Back', 'Next >', and 'Cancel'.

- On the **Proxy details** page, type the proxy server address and port number. If necessary, type a username and password that give access to the proxy server. If the username needs to be qualified to indicate the domain, use the form domain\username. Click **Next**.

- On the **Ready to install Sophos Anti-Virus** page, click **Next**. You should see Sophos Anti-Virus being installed on your computer.
- On the last page of the wizard, saying that you have successfully installed Sophos Anti-Virus, click **Finish**.

Windows 95/98/Me computers must be restarted to complete installation. Windows 2000 or later computers only need to be restarted to scan files accessed by DFS (Windows 2000 or later) or via non-Microsoft file systems (Windows 2000).

Installation is complete when the Sophos Anti-Virus system tray icon is blue.



- ⓘ If the icon is gray, this means that the on-access scanner is not running and your computer has *no* on-access protection against threats. For help contact your system administrator.
- ⓘ If a red circle with a white cross in it appears over the Sophos Anti-Virus system tray icon, Sophos Anti-Virus failed to update itself. For help, contact your system administrator.

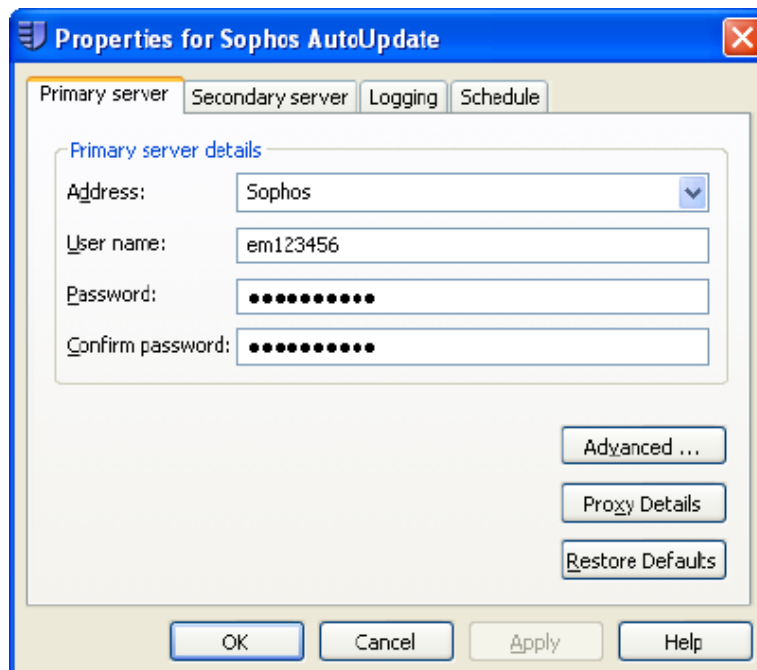
Sophos Anti-Virus will update itself automatically from the update source that you specified. By default, it will do this every 60 minutes, provided that the computer is connected to the internet.

If you didn't specify an update source from which Sophos Anti-Virus can update itself, go to section 2.3.

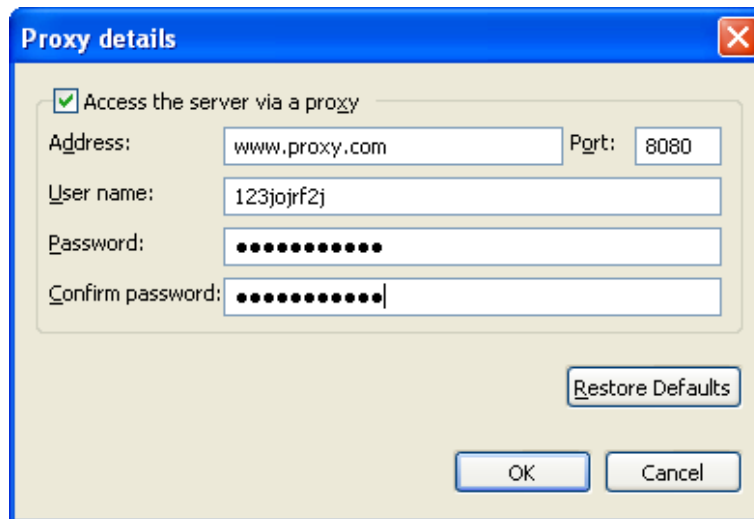
2.3 Configure Sophos Anti-Virus to update itself

You only need to follow the instructions in this section if you didn't specify an update source during installation.

1. If your computer is running Windows NT/2000 or later, log on as an administrator. In the system tray, right-click the Sophos Anti-Virus icon to display a menu. Select **Configure updating**.
2. In the **Properties for Sophos AutoUpdate** dialog box, click the **Primary server** tab. To enter the update source, select **Sophos** or, if your system administrator has supplied you with an address, type that address. Then enter the username and password, which the system administrator has supplied. If you access the internet via a proxy, click **Apply**, and then click **Proxy Details** and go to step 3. Otherwise, go to [step 4](#).



3. In the **Proxy details** dialog box, select **Access the server via a proxy**. Then type the proxy server address and port number. If necessary, type a username and password that give access to the proxy server. If the username needs to be qualified to indicate the domain, use the form domain\username. Click **OK**.



4. In the **Properties for Sophos AutoUpdate** dialog box, click **OK**.
Sophos Anti-Virus will update itself automatically from the update source that you specified. By default, it will do this every 60 minutes, provided that the computer is connected to the internet.

❗ If a red circle with a white cross in it appears over the Sophos Anti-Virus system tray icon, Sophos Anti-Virus failed to update itself. For help, contact your system administrator.

3 Installing Sophos Anti-Virus for Mac OS X

3.1 Install Sophos Anti-Virus

- ❗ You must uninstall any other vendor's anti-virus software before installing Sophos Anti-Virus.
- ❗ The following procedure explains how to install Sophos Anti-Virus from the Sophos website. If you want to install it from the **Sophos Standalone Install CD**, at the computer on which you want to install Sophos Anti-Virus, insert the CD. Start the installer and go to step 3.
 1. Using the web address and download credentials provided by your system administrator, go to the Sophos website and save Sophos Anti-Virus for Mac OS X to your computer.
 2. Open the downloaded file, find **Sophos Anti-Virus.mpkg** and double-click it.
 3. A Mac installer runs. Click **Continue**. Follow the steps until installation is finished. Installation is complete when the Sophos Anti-Virus menu bar icon is blue.



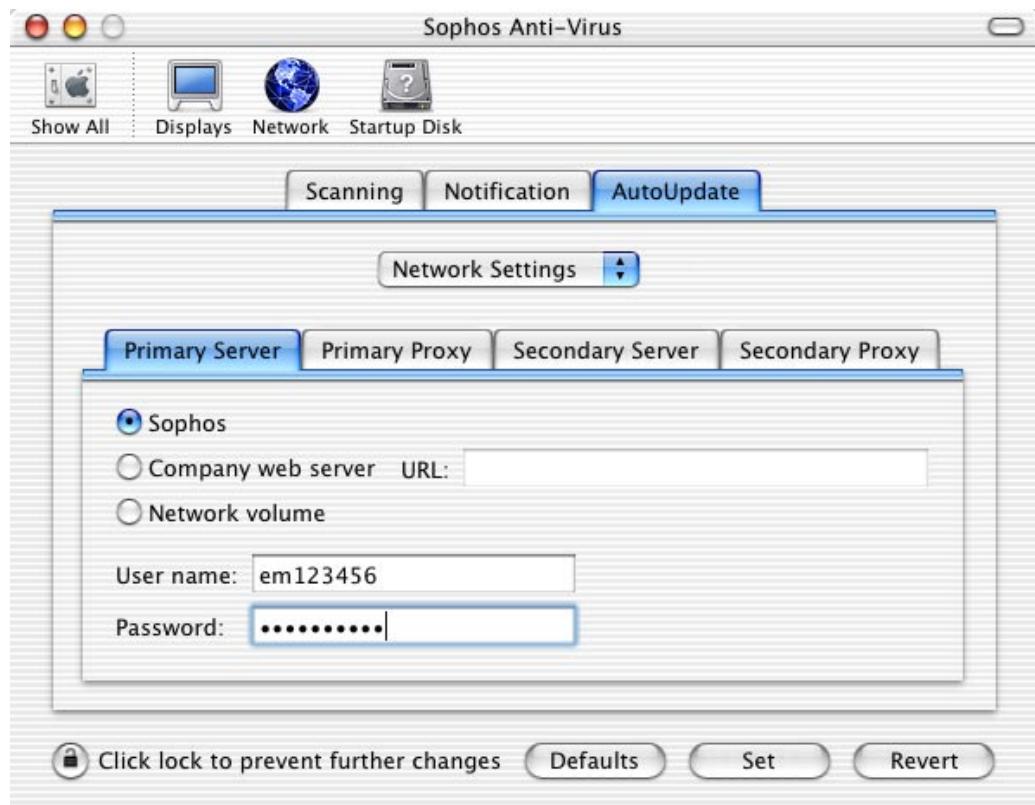
- ❗ If the icon is gray, this means that the on-access scanner is not running and your computer has *no* on-access protection against threats. For help, contact your system administrator.

3.2 Configure Sophos Anti-Virus to update itself automatically

1. On the right side of the menu bar, click the Sophos Anti-Virus icon to display a menu. Choose **Open Preferences**.
2. In the Sophos Anti-Virus preferences pages, click the padlock icon and enter your username and password so that you can make changes. Note that you must have administrative rights to make changes to this dialog.

3. At the top of the **AutoUpdate** tabbed page, on the pop-up menu, choose **Network Settings**. Click the **Primary Server** tab.

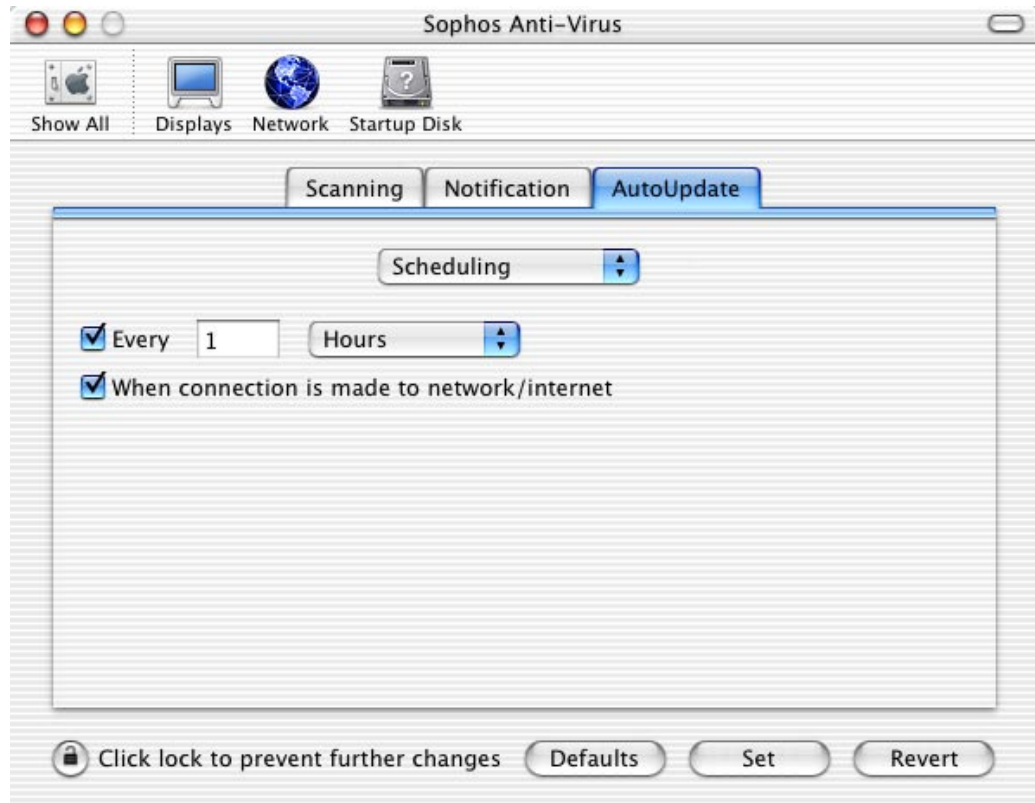
To enter the update source, click **Sophos** or, if your system administrator has supplied you with an address (URL), click **Company web server** and type that address. Then enter the username and password, which the system administrator has supplied.



4. If you access the internet via a proxy server, click the **Primary Proxy** tab. Click **Use system proxy settings** to enable Sophos Anti-Virus to use the proxy settings that have been set up in the system preferences. Click **Use custom proxy settings** to enable Sophos Anti-Virus to use the proxy settings that you enter on this tabbed page. Then type the proxy server address and port number. If necessary, type a username and password that give access to the proxy server.



5. At the top of the **AutoUpdate** tabbed page, on the pop-up menu, choose **Scheduling**. Select **When connection is made to network/internet**.



6. Click **Set** to put the changes into effect.

Sophos Anti-Virus will update itself automatically from the update source that you specified. By default, it will do this every 60 minutes, provided that the computer is connected to the internet.

- ! If a red circle with a white cross in it appears over the Sophos Anti-Virus menu bar icon, Sophos Anti-Virus failed to update itself. For help, contact your system administrator.

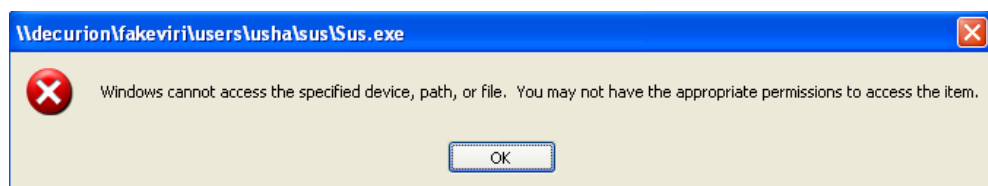
4 Clearing an alert in Windows

This section refers to Sophos Anti-Virus for Windows only. When Sophos Anti-Virus encounters an application behaving in a suspicious manner, a Sophos alert appears in the system tray, and a Windows popup appears on the screen.

- ❗ Sophos advises you to notify your System Administrator of the information in the alert and take appropriate advice.
 1. Note the details in the **Sophos Anti-Virus** alert, and close the alert.



2. In the Windows popup, click **OK** to clear the screen.



5 Technical support

For technical support, visit www.sophos.com/support.

If you contact technical support, provide as much information as possible, including the following:

- Sophos software version number(s)
- Operating system(s) and patch level(s)
- The exact text of any error messages

Copyright © 2007 Sophos Group. All rights reserved. No part of this publication may be reproduced, stored in a retrieval system, or transmitted, in any form or by any means, electronic, mechanical, photocopying, recording or otherwise unless you are either a valid licensee where the documentation can be reproduced in accordance with the licence terms or you otherwise have the prior permission in writing of the copyright owner.

Sophos and Sophos Anti-Virus are registered trademarks of Sophos plc and Sophos Group. All other product and company names mentioned are trademarks or registered trademarks of their respective owners.